

A fuel hearth is the variety of issue you miss rapidly while it stops behaving. One minute it's throwing out snug warmness, a better it's reluctant to faded, glints as though it's desirous about it, or refuses to ignite altogether. In Essex, wherein many houses are a mixture of older installs and more recent renovations, ignition considerations can come from something as fundamental as a grimy pilot, to something extra serious like a failing protection portion or a flue challenge that variations pressure and combustion.

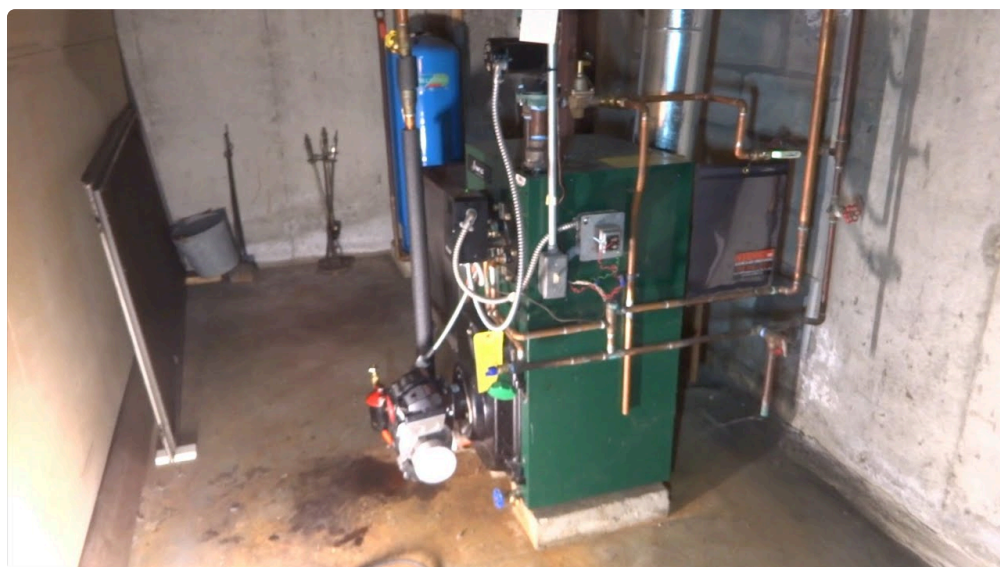
I've been referred to as to lots of buildings wherein the home owner has tried the apparent issues, the fireplace still won't behave, and the actual frustration is uncertainty. Is it safe? Is it fixable instantaneous? Will it desire areas? The strong news is that so much ignition faults have a sample, and with the proper service frame of mind possible narrow it down rapid.

This booklet specializes in ignition troubles, what ordinarily motives them, and the way they're looked after for the period of a good Gas Fire Service Essex go to. I'll also contact on gasoline safe practices issues that must no longer be not noted, as a result of "it lights at last" is not really a safety technique.

When ignition goes mistaken, it's rarely random

Gas fires are small methods, but they depend on quite a few working parts in the perfect order. Heat is produced simplest while the gasoline, air, spark or pilot, and protection sensing all agree. If anybody of those items is off, the hearth may fail to light, easy then exit, smell smoky, or behave unevenly.

In exercise, ignition troubles tend to fall into a number of not unusual behaviours:



- delayed lighting, fairly after the hearth has been off overnight
- a spark without ignition
- the burner lighting fixtures, then the flame drops out after a short period
- intermittent lights, frequently wonderful for days then without warning not
- a pilot that looks vulnerable or won't reside stable

People describe these in their own way, but the underlying factors are typically consistent.

In Essex, I additionally see a number of LPG setups where the behaviour can range a bit. Some LPG approaches have faith in specific regulator settings, and if anything has drifted, the ignition series can turned into sluggish. If you're in an LPG Essex belongings, that context issues for the time of diagnosis.

The most common ignition causes I see

1) The pilot and injector get dirty

If your gas fireplace has a pilot ignition formula, airborne dirt and dust is a vintage wrongdoer. Dust, lint, insect particles, and regular relatives fallout can acquire across the pilot edge. Over time, that reduces gasoline circulate or interferes with how the flame types.

A pilot that doesn't cleanly identify a reliable flame is more likely to cause the safeguard shut-off, on the grounds that the method reads "no flame" and refuses to avert feeding gas. That's why you might get repeat attempts that by no means absolutely get to the bottom of.

In older units, the injector and surrounding passages might also partly block. You might nevertheless get a faint flame, but it gained't be stable sufficient to run appropriately. The outcome is in most cases "it approximately lighting" adopted with the aid of shutdown.

2) Thermocouple or flame sensor failure

Modern gasoline fires regularly use both a thermocouple, thermopile, or a flame-sensing equipment relying on the type. If the thing is worn-out, corroded, or no longer responding quick sufficient, the fire can spark and easy temporarily, then extinguish.

It's easy to misjudge this. Homeowners traditionally suppose the gas source is at fault, or they maintain seeking till the unit ultimately catches. In reality, susceptible sensing leads the hearth to settle on it's unsafe, and the burner is going out.

3) Ignition electrode issues

A spark is simplest useful if it reaches the right kind hole and is robust sufficient. If the electrode is worn, misaligned, lined in soot, or the insulation is broken, one can get weak sparks or none at all. The hearth might also click on time and again with no ignition, or it could ignite in a few positions and not others.

I routinely in finding that the electrode appears to be like "kind of tremendous" until it's demonstrated, checked for proper positioning, and inspected for carbon build-up. Carbon can create unwanted leakage paths, so you get a spark that seems like it's running but fails to ignite the gasoline combination.

four) Gas rigidity and regulation problems

Sometimes the problem seriously is not the fire itself but the approach gas is being provided to it. Gas power difficulties can have an impact on ignition and flame balance. In a organic gas estate, this may relate to service pressures or regulator settings. In LPG, it will be relating to the cylinder or bulk grant regulator.



You can see signs like delayed lighting fixtures, weak flames, or inconsistent ignition. This also is in which a precise appliance inspection is helping. Gas hearth provider isn't just "check out it and spot." A powerfuble engineer assessments the source and combustion features so you do no longer grow to be chasing areas devoid of a clear cause.

five) Air supply and combustion performance

Gas fires nevertheless need proper air for combustion and safe exhaust. If the hearth's air paths are blocked with the aid of dirt or debris, or if the air flow obstacle is changed in the house, ignition and flame great can trade.

This could also be wherein flue and evacuation topics come into play for special designs. If a flue is in part obstructed or there's a rigidity predicament, the flame may not set up efficaciously. In those eventualities, persisted makes an attempt can get worse soot formation, which then feeds lower back into ignition difficulties.

If you odor combustion merchandise, see abnormal soot, or realize spillage warning signs, the best response is just not repeated ignition tries. It's a stop and a safeguard-centered inspection.

What a ideal Gas Fire Service Essex seek advice from routinely checks

A safe provider seek advice from is methodical. You ought to count on inspection, exams, cleansing wherein terrific, and verification that the hearth operates correctly inside of favourite parameters. Depending at the appliance, this may come with tests of pilot operation, spark position, gas handle response, burner cleanliness, and protection software functionality.

Also, a reputable engineer doesn't forget about the encompassing deploy. The most effective gasoline fireplace subject matters in many instances hint to come back to how the unit is put in, vented, or hooked up, surprisingly whilst the house has gone through renovations.

If you're also dealing with broader compliance, it may hook up with Gas Safety Check Essex standards. Some families consider fuel security as a annually tick-box, but ignition functionality and safety software behaviour are component of the larger safety graphic. If your fire is temperamental, that's not whatever to postpone.

If you've bought a "Burger van gasoline" place, take more care

I'll say this it seems that. If your premises uses a gasoline setup that serves cuisine, the environment is harsher. Grease particles, steam, airflow transformations, and general use can all have an affect on burners and pilot steadiness. If you're operating with "burger van gasoline Essex" logistics, popular tests rely considering that grime and airflow adjustments can accelerate grimy ignition subject matters.

The related concept applies whether or not it's not a cellular setup. Any industrial surroundings the place tools is exposed to oil and particulate rely will see speedier infection than a quiet home dwelling room.

Troubleshooting you're able to do appropriately beforehand calling out an engineer

There are a pair of things house owners can verify without taking the unit aside or bypassing safety formulation. I'm careful here when you consider that ignition troubles can involve gasoline and safety close-offs. If you're undecided at any degree, it's more beneficial to quit and get a legitimate.

First, if the fire is not lights, test whether the room smells strongly of gasoline or if you happen to see scorch marks or noticeable wreck. If both is existing, don't store looking. Ventilate the room and get it assessed.

Second, inspect the controls and any up to date variations. Has the thermostat or far off been altered? Has the battery on a faraway receiver been replaced? Has an individual just lately cleaned close to the hearth and stirred up mud? Those information guide slim the in all likelihood reason.

Third, confirm the issue isn't comfortably a blocked view. Sometimes "it received't light" is in truth "it tries to gentle however the flame sample isn't attaining the sensor." Cleaning obtainable surfaces round the front can aid, but do no longer scrape interior formulation, and do now not take away constituents you are usually not intended to eliminate.

If you favor a quick home-owner guidelines, this is often as a long way as I advise going:

- Ensure the fire place is loose from filth, fluff, and transparent debris
- Don't usually press ignition if the flame does now not establish
- Check the keep an eye on settings and faraway force, if applicable
- If you scent gas, stop and ventilate earlier any added attempts
- Note what occurs all over the attempt (spark solely, short flame then off, not on time ignition)

That record just isn't an alternative choice to carrier, it's just a smart first layer of safeguard and diagnosis.

The distinction between "it won't light" and "it lighting fixtures then is going out"

One of the fastest tactics to slim down a fault is to take note of the timing. Ignition techniques are designed to reply in series, so the pattern you note can tell you which ones portion is failing.

If the hearth received't easy at all, you're possible managing one of these: no spark, pilot not forming a sturdy flame, blocked course fighting ignition, or ignition timing things motivated with the aid of sensors.

If the fire lighting fixtures and then goes out after a brief prolong, protection sensing is a superior suspect. The unit senses flame balance. If the flame is too susceptible, distorted, or not in the ideal role relative to the sensing aspect, the protection mechanism shuts it down. A vulnerable pilot because of grime or a failing thermocouple can produce that special behaviour.

If your unit is underperforming and also you get repeated shutdown, it's a sign to cease troubleshooting casually. Repeated makes an attempt can lead to soot build-up and extra illness, which then makes the ignition trouble worse.

A more direct take a look at ignition troubleshooting right through service

When I'm troubleshooting on web page, I'm routinely working using a logical collection: look at various the obvious exterior points, then be sure operation of ignition and pilot, then ensure sensing and safeguard response, then verify combustion and fuel give qualities. It's no longer about swapping areas seeing that any one once acknowledged that a specified issue "recurrently fails." Parts get replaced while exams convey they may be failing or out of tolerance.

Here's the common waft in simple English:

- 1) test the fault trend and what the hearth does for the duration of ignition attempts
- 2) check out and blank pilot and valuable gasoline passages if infection is present three) attempt ignition spark efficiency and ensure electrode situation and condition four) payment safety gadget response and flame sensing accuracy, then run a combustion check

That series in many instances finds the perpetrator speedily, and it also prevents unnecessary replacement of really good constituents.

Common eventualities in Essex properties (and why they count number)

Older fireplaces, up to date behaviour

Many Essex houses have inherited fuel fires. Sometimes the flue procedure and air specifications were the best option while first set up, but later renovations converted the room. A greater sealed home, new extractor fanatics running, or altered airflow can impression how the fireplace performs. In those circumstances, ignition complications can worsen through the years no matter if the equipment turns out "the identical."

I've additionally observed situations wherein decorative supplies around the hearth had been up to date, and the airflow round vents or intakes become limited. The ignition manner then struggles, and the flame in no way reaches the good selection required for riskless sensing.

The "quick restoration" that creates a longer issue

Homeowners every now and then use sprays or test cleansing in tactics that inadvertently coat surfaces, trade residue, or intervene with sensors. A tiny quantity of residue close a flame sensing component can make the safety shut-off extra touchy than it should always be. Then the hearth may perhaps light for some seconds and exit, which looks as if a failing defense gadget. In fact, it could be infection from an improper cleansing product.

If you've tried whatever thing inside of or around the fire, tell your engineer. It saves time, since it modifications the seemingly motives.

LPG tactics and regulator drift

For LPG Essex houses, the grant features can exchange with cylinder situation, ambient temperature, regulator functionality, and time considering that remaining use. Ignition that is excellent while the cylinder is full and vulnerable after it has been running for it slow is a clue. It's not evidence via itself, but it's a trend that have to be checked along combustion excellent and flame qualities.

Gas safety certificates Essex, and why ignition concerns [hyperlink to it](#)

A Gas safeguard certificate is about greater than office work. It's about making certain gas home equipment are trustworthy to function. If a fuel fireplace has ignition trouble, it can lead to incomplete combustion, soot formation, and unreliable protection sensing. Even if the hearth "in the end works," the ones faults can still create detrimental operation.

In a domestic with numerous gasoline appliances, a Gas security certificates Essex consult with steadily consists of thorough exams that aid become aware of worries throughout appliances, not simply one. If your boiler can also be causing issues, it could compound the whole consolation and safeguard trip.

If you furthermore may need wider enhance, many other people in Essex attach their gasoline fireplace service with different amenities like Boiler Breakdown Essex advice, Boiler Repair Essex, or Boiler Service Essex. Those are unique appliances, various faults, however the related precept applies: look at various wisely, refreshing true, be certain effectively.

When to concentrate on Gas Fire Installation Essex or a complete replacement

Some ignition things are recurring when you consider that the equipment itself is at the quit of its terrific existence, or on account that alternative ingredients are no longer effectively appropriate with the prevailing setup. If the fire requires repeated elements replacement, persistent cleaning with out lasting benefit, or has combustion characteristics that are not able to be delivered back into secure working variety, replacement is additionally the smarter direction.

Gas Fire Installation Essex may be proper if the usual unit is poorly suited to the room's ventilation and the flue or air preparations do not tournament present day protection expectations. A new set up, wisely deliberate, can cast off the nuisance faults that stay bringing the engineer lower back.

Replacement isn't usually more cost effective within the short term, but it more often than not wins on reliability. And should you're managing a specific thing you depend on for warmth, "trustworthy" is additionally greater efficient than "cheapest."

Beyond the fireplace: other Essex facilities that every so often tie in

Ignition trouble are usually not at all times remoted. Sometimes the foundation cause sits one step away, within the wider plumbing or heating equipment.

If you've obtained fluctuating pressures or matters that commenced after other paintings, it is going to connect with Plumbing Essex changes or alterations. If you've lately had contractors operating on pipework or ventilation, it could actually affect how fuel appliances behave.

Some home owners additionally bundle home alleviation prone. For instance, when you're shopping at Aircon Essex or Air Conditioning Essex alongside heating upgrades, it's worth coordinating as a result of air flow and airflow conduct in the dwelling influence combustion appliances too. It's hardly at once caused by

an air con unit, however the way the house is sealed and ventilated can have an impact on the stipulations around a gasoline hearth.

Power Flush Essex is a alternative subject matter, more commonly regarding heating circuits in preference to fires, however it's well worth noting considering of us normally sense assorted indications after crucial heating paintings. If your formula performance changed at the equal time the fire all started acting up, point out that for your engineer.

Cost expectancies, and why "low priced" troubleshooting can expense greater later

I can't give constant prices without knowing the precise equipment, mannequin, and fault. But I can tell you this from event: the cheapest outcome probably come from correct diagnosis, no longer from guessing.

If an engineer cleans and repairs a infected pilot meeting and replaces a failed sensor with a like-for-like side, the task may well be trustworthy and price-wonderful. If, nevertheless, a person replaces random constituents without testing gasoline furnish and combustion, you're able to come to be buying dissimilar call-outs that will had been preventable with the correct exams.

The most well known significance is a provider that produces a clean rationale for the fault, not just a running fire for every week.

Questions well worth asking if you happen to e book Gas Fire Service Essex

When you call a native engineer, you're no longer being difficult by using asking questions. You're ensuring you get the correct technique.

You might ask approximately what will be inspected, regardless of whether the engineer will take a look at security reaction, and the way they test combustion and desirable operation formerly leaving. If you have a family member with respiration circumstances or while you are in a condo belongings, ask how they set up safeguard documentation and any similar Gas Safety Check Essex specifications.

If the hearth is section of a much broader gasoline setup, one can also ask regardless of whether they will suggest if Boiler Repair Essex or Boiler Service Essex should be reviewed at the equal time. Often, anybody will word related matters throughout a broader inspection.

Practical examples: what the repair feels like on true name-outs

Example one: the vulnerable flame pattern

A home-owner studies delayed ignition and a "clicking" sound with no flame. On inspection, the pilot side is coated with dirt, and the pilot flame is susceptible and not positioned successfully relative to the sensor. After thorough cleansing and a correct determine, the pilot establishes a strong flame, and the safe practices part responds successfully. The fire starts off lights perpetually, and the flame good quality is exceedingly more advantageous.

Example two: sparks however no ignition



Another call comes from a the different abode: the hearth makes a spark but not ever ignites the gasoline. The electrode has a slight misalignment and carbon construct-up around the insulation. Adjusting and cleaning brings the spark returned into an appropriate location. Once the ignition reaches the suitable point, [Boiler Breakdown Essex](#) the pilot lighting and stays good.

Example 3: lights quickly, then goes out

A hearth begins for a moment after which shuts down on every occasion. The investigation points toward a failing sensing part that shouldn't preserve ample signal underneath common working circumstances. Replacing the principal security system and verifying operation restores reliable ignition. The key moment is that it seriously is not guesswork, it's verification.

These situations are wide-spread since the screw ups themselves are traditional. But what topics is the procedure. The purpose is reliable operation and protected behaviour, not truly getting a flame on demand.

If you need lend a hand past ignition problems

Some families name for gas fireplace service at the same time additionally dealing with boiler worries or broader heating method ameliorations. If you're experiencing a [Boiler Breakdown Essex](#) hindrance, it will be worthy booking a [Boiler Repair Essex](#) or [Boiler Service Essex](#) consult with instantly so that you will not be coping with numerous platforms with distinct unknowns.

If you are planning enhancements, [Boiler Installation Essex](#) and [Gas Fire Installation Essex](#) selections oftentimes overlap in the way you give some thought to comfort, ventilation, and future maintenance. It's simpler to devise while the entire procedure is thought to be, other than coping with each one appliance as an isolated situation.

And in the event you are jogging fuel home equipment in business settings, consisting of nutrients service environments like a burger van gasoline Essex setup, ignition reliability matters for workflow and safe practices. In these contexts, traditional checks can save you inconvenient shutdowns and decrease the threat of nuisance faults going down on the worst achievable time.

One ultimate thing to take seriously

If your fuel hearth ignition difficulty entails exotic smells, visible soot the place there shouldn't be soot, repeated failed ignition tries, or signs and symptoms that indicate deficient combustion or spillage, do no

longer stay seeking to gentle it. Stop, ventilate if wished, and get it inspected. Ignition screw ups are on the whole fixable, however safety should always e-book your next go.

A good-run Gas Fire Service Essex call does greater than repair heat. It makes positive the fireplace is working as designed, and that the safety equipment is doing its job anytime you desire it.

If you'd like, inform me what the fire does if you press ignition (spark simplest, behind schedule ignition, lighting then goes out after how lengthy, any scent or soot). With that aspect, I can narrow down which factors are maximum likely and what to expect from the troubleshooting activity.