

## What's The Current Job Market For Case Opening Professionals?

### Case Opening: Understanding the Mechanics, Risks, and Strategies

#### *Intro*

Case opening is a game-mechanic that has ended up being a hallmark of numerous modern competitive video games. In short, players purchase or earn a sealed container-- typically called a "case"-- and unlock it to expose a random in-game item. The items vary from common cosmetics to exceptionally uncommon skins, weapons, or other collectibles that can be traded or offered on secondary markets. While the procedure is basic on the surface area, the underlying randomness, economics, and mental factors make case opening a complex topic worth checking out.

#### *How Case Opening Works*

At its core, case opening counts on a random-number generator (RNG) that assigns possibilities to each possible outcome. Each case includes a predefined set of items, and the chances of getting a specific rarity are typically revealed by the game developer. When a gamer "opens" a case, the RNG picks a rarity tier first, then chooses a particular product within that tier. The result is provided immediately, often accompanied by visual and audio results that increase the sense of anticipation.

Since the chances are normally low for the most valuable products, the expected worth of a single case opening is normally lower than its purchase price. This produces an intrinsic danger: players might get products worth far less than the expense of the case, or they may hit a rare "jackpot" that exceeds expectations.

#### *Economic Landscape*

The secondary market for case-obtained items can be financially rewarding. Uncommon skins and collectibles often maintain or even value in worth, particularly when shortage [cs2skin.com](https://cs2skin.com) is driven by limited-time releases or special occasions. Online markets, community trading online forums, and auction platforms allow players to sell their payouts for genuine currency or in-game credits.

However, market costs are unpredictable. Elements such as video game popularity, brand-new material releases, and neighborhood sentiment can trigger fast fluctuations. Players who treat case opening purely as an investment should stay informed about market patterns and understand that the value of an item can drop significantly after a new case or upgrade is presented.

#### *Techniques and Responsible Play*

- **Set a Budget**-- Decide in advance how much money you want to invest on cases, and stay with that limitation. Treat the expenditure as entertainment cost, not a possible income.
- **Research Odds**-- Familiarize yourself with the released drop rates. Understanding the approximate likelihood of obtaining a high-value product can assist handle expectations.
- **Timing Matters**-- In some video games, case prices change with seasonal occasions or after significant updates. Purchasing cases when demand is lower can enhance the cost-to-value ratio.
- **Think About Bulk Purchasing**-- Some platforms offer "case bundles" or "mystery boxes" at a discount rate. While the total expected value may still be negative, the per-case expense can be minimized.
- **Prevent Chasing Losses**-- If a series of openings yields bad results, withstand the desire to invest more in an effort to recuperate losses. This behavior can cause bothersome gambling patterns.

A balanced method emphasizes pleasure over revenue, and numerous players discover success by dealing with case opening as a fun diversion instead of a severe investment.

### *Case Types and Typical Drop Rates*

Case Name	Approximate Price (In-Game Currency)	Common Drop Rate (%)	Rare Drop Rate (%)	Ultra-Rare Drop Rate (%)
Basic Weapon Case	2.5 credits	79.5	19.0	1.5
Event Mystery Crate	5 credits	70.0	25.0	5.0
Premium Skin Box	12 credits	60.0	30.0	10.0
Collector's Vault	25 credits	50.0	35.0	15.0

*Note:* The figures above are illustrative; real odds differ by title and may change with video game updates.

### *Pros and Cons of Case Opening*

#### **Pros**

- **Immediate Reward Feedback:** The visual expose offers immediate enjoyment.
- **Prospective for High-Value Items:** Even though uncommon, the opportunity of getting a coveted skin can be rewarding.
- **Community Interaction:** Trading and discussing drops promote social engagement.

#### **Cons**

- **Low Expected Return:** Most gamers will get products worth less than the case cost.
- **Risk of Overspending:** The adventure can encourage excessive costs.
- **Regulatory Scrutiny:** Some jurisdictions classify loot boxes as gaming, causing legal dangers for designers and gamers alike.

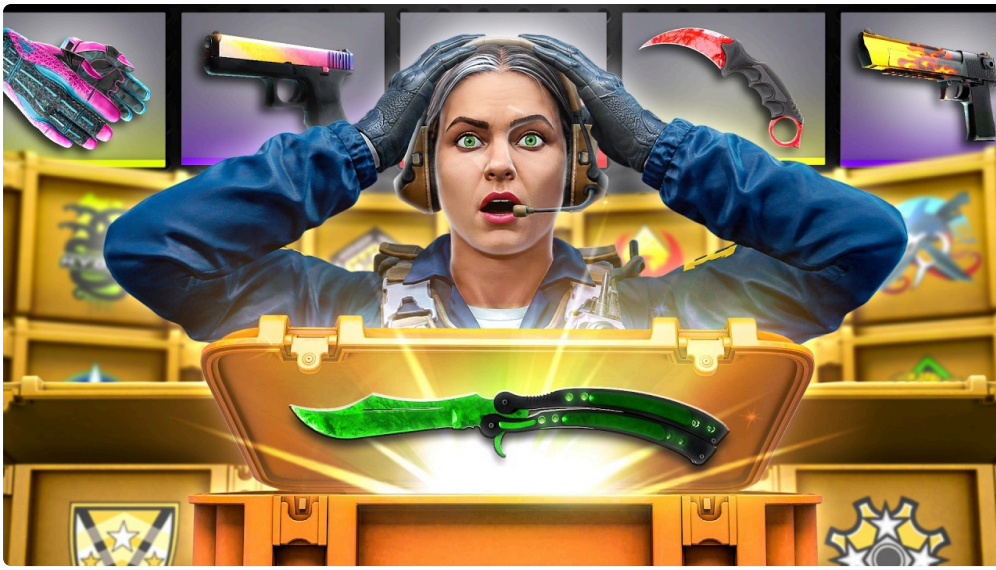
### *Frequently Asked Questions*

**1. Is case opening considered gambling?**In lots of areas, loot boxes are categorized as gambling if they can be exchanged for real-world value. However, policies differ by nation, and some games clearly prohibit cash-out mechanisms. Players must familiarize themselves with regional laws before participating. **2. Can I enhance my chances by opening cases at a particular**

**time?**The RNG operates separately of the time of day, so there is no tested advantage to opening cases at specific moments. However, market rates may be lower throughout off-peak periods, indirectly affecting the cost-to-value ratio. **3. What should I do if I discover a pattern of overspending?**If case opening begins to impact your financial resources or well-being

, consider taking a break, setting more stringent spending plans, or seeking support from responsible-gambling resources. Many platforms use self-exclusion tools that limit or obstruct purchases. **4. Are there any genuine methods to obtain complimentary cases?**Some games reward gamers with totally free cases through gameplay accomplishments, battle passes, or unique promos.

**Making use of these free**



**opportunities can minimize the monetary risk associated with**

case opening. 5. Do case opening likelihoods change over time? Developers might adjust drop rates with spots or new content releases. It is advisable to examine the official patch notes or neighborhood announcements for the most existing chances.

**Conclusion** Case opening remains a popular yet polarizing function within the video gaming industry. While it offers a fast rush and the possibility of getting rare products, it likewise carries inherent monetary threat and ethical factors to consider. By understanding the mechanics, *remaining informed about market trends, and practicing responsible play, gamers can take pleasure in the home entertainment value of case opening without falling into problematic gambling habits. As constantly, people must assess their own circumstance, abide by local regulations, and prioritize fun over profit.*