

Boiler service sounds practical on paper. Turn up, test a number of bits, determine it fires wisely, go away a section of documents and a bill. In proper life, the change between “it appears to be like first-rate” and “it’s far really risk-free” comes down to controls, sensors, and the common-or-garden little switches that ward off small trouble turning into good sized ones.

If you’re in Essex and you’re reserving a boiler provider, you regularly favor two issues: you would like it to retailer heating your place, and also you favor the safe practices controls doing their job precisely like they deserve to. That’s what it truly is about. Not the sleek stuff, the realistic assessments that inform you no matter if the boiler’s protection mind is paying cognizance.

The protection controls are the boiler’s seatbelts

A state-of-the-art gasoline boiler is basically a suite of strategies that all need to trust every single different. The thermostat asks for warmth, the controls figure out no matter if the boiler needs to fire, the ignition device lighting fixtures it, the burner modulates, and then a gaggle of safe practices units anticipate signs and symptoms that a specific thing has long gone wrong.

If a protection control fails, you do no longer forever get a dramatic fault. Sometimes the boiler just behaves “a bit of off” for weeks, cycling greater than it needs to, shutting down early, or suffering to achieve temperature. Sometimes you most effective discover during a carrier, while any individual checks the manipulate pathway competently.

When I’m checking a boiler, I strive not to call to mind it as “service = clear and change areas.” I think of it as “provider = turn out the safety chain works.” That capacity having a look at what triggers a shut down, what resets it, and no matter if the fault is detected within the first vicinity.

First, the basics that impact defense checks

Before I even get into the defense controls, I do a short set of basis tests. Not as it’s flashy, but as a result of safety checking out can lie if the boiler is already in a unusual nation.

For instance, combustion performance and airflow subject matters can mimic defense faults. A flue subject, blocked condensate route, or a fan subject can lead to the boiler to stop with an errors code that features to a security keep an eye on despite the fact that the root motive is in different places.

Also, a boiler that has been “these days mounted” could have constituents fitted with out doing the whole set of exams. I’ve noticeable boilers the place any person replaced a sensor, reset the entirety, and moved on, leaving the underlying thing to come back lower back later, normally when the weather turns chillier.

So I birth with the installing context: formula tension on sealed procedures, obvious situation of the flue, actual condensate discharge, and any symptoms of leaks round joints and pipework. Those aren’t “defense controls” in the same method as a strain change or thermistor, but they truly effect regardless of whether the ones controls perform accurately.

What I’m checking after I say “security controls”

Different boiler types have alternative safeguard gadgets, however the rules are regular. The boiler demands to preserve in opposition to overheating, loss of water circulate, ignition or combustion failure, damaging flue

operation, and repeatedly gasoline delivery concerns depending on brand.

On most boilers in Essex residences, the safety tests all the way through a service generally tend to revolve around several key communities:

1. Overheat safety (so it doesn't prepare dinner itself while warmth can't go where it should still)
2. Ignition and combustion sensing (so it doesn't stay firing if it hasn't lit or if combustion isn't happening appropriately)
3. Flue and fan similar safe practices (so products of combustion don't spill into the property)
4. Water drive and circulation protections (so a sealed approach nonetheless has enough water and circulate)

The appropriate elements and assessments depend on the boiler manufacturer, age, and manipulate board, however the nontoxic means is at all times the identical: ensure the machine does what it's alleged to do, no longer just that it exists.

Pressure, move, and the "don't let it run dry" logic

Sealed structures depend on precise tension, and the boiler's job is to retailer water circulating by the warmth process. If the drive is low, you'll be able to grow to be with deficient movement. That's wherein safeguard devices remember.

On many boilers, a pressure sensor or pressure change supports the boiler decide even if there's ample water rigidity and whether that's trustworthy to hold firing. Some procedures additionally use float-related sensing or internal temperature monitoring to notice regardless of whether the warmth is transferring.

If drive is simply too low, the boiler may also lock out or shut down, and it should still be reset adequately per its design. What I await all through a carrier will not be simply that the boiler starts and runs, but that the tension analyzing makes feel and that there aren't any telltale signals of a habitual strain drop.

A immediate example from a couple of winters returned: I serviced a boiler that ran perfectly whilst the heating used to be on, but the home-owner stored dropping power and topping it up every couple of months. The boiler's power safeguard hadn't failed fullyyt, however the manner turned into quietly leaking. That reasonably routine low pressure is the truly threat. A security keep watch over can in simple terms safeguard the boiler lots, and commonplace topping up may additionally introduce oxygen into the manner and irritate corrosion over the years.

So all over a carrier, I look for the symptom sample. If tension is solid, quality. If it's not, I deal with that as a safety situation, whether or not the boiler hasn't thrown a lockout but.

Overheat renovation: sensors, cut-outs, and precise-world symptoms

Overheating is the traditional "one thing is combating warmness from transferring far from the boiler" situation. The boiler can't just stay firing indefinitely. It wishes to come across odd temperatures and shut down.

Most boilers use temperature sensors to video display glide and return, usually inner sensors for the heat exchanger, and then the controls determine whilst to cease and when to restart.

Here's the frustrating area. Overheat safety isn't continually brought on considering the boiler is basically overheating in a dramatic feel. Sometimes the equipment circulation is limited, radiators are blocked, the

diverter valve is stuck, the pump is failing, or a thermostatic radiator valve has jammed in a approach that kills movement.

A carrier inspection must always comprise checking movement aspects as applicable. If the boiler helps it, I additionally investigate that pump operation makes feel, that filters aren't catastrophically clogged, and that radiators the truth is heat up lightly when the heating is running. Even if the ones aren't "defense controls," they're the cause safe practices controls get often known as on inside the first location.

A properly life like test in the time of a provider is to realize how the boiler behaves throughout a call for warmth. Does it succeed in temperature rapidly? Does it modulate and deal with steadiness? Does it quick cycle? Persistent short biking can factor to a regulate thing, a drift dilemma, or in some cases a sensor analyzing that makes the boiler suppose it has reached temperature when it hasn't.

I don't simply have faith in the error records. Boilers can be reset after faults. People occasionally clean faults without logging what passed off. So the bodily and operational exams are what you confidence when the timeline is fuzzy.

Ignition and flame monitoring: the keep watch over's "prove it's burning" duty

If you've ever heard a boiler stir up, you understand the sound and the mild pause formerly the burner lighting. Behind that is an ignition and flame detection regimen. The boiler have to ensure that there may be flame.

If the boiler can't hit upon flame when it attempts to ignite, it must always shut down in place of often making an attempt in an unsafe approach. Most boilers use a flame detection machine that may fail owing to undemanding things like electrode situation, however additionally simply by combustion worries.

During a carrier, I payment the ignition system and flame detection trail in line with the boiler fashion. That primarily consists of examining and cleansing factors, checking the integrity of connections, and guaranteeing the electrode function and circumstance are good. The fuel defense piece isn't always anything you wager at. It's whatever thing you verify as a result of most suitable commissioning and, the place excellent, useful verification.

The "lived expertise" perspective the following is really good. Flame troubles most of the time demonstrate up as intermittent matters, chiefly when the boiler is older or whilst dampness influences the electrode house. A boiler would ignite high quality for months, then suddenly misfire on bloodless mornings. The safe practices logic is doing what it's supposed to do, however if the underlying detection or combustion setup is marginal, it retains happening.

So ignition and flame monitoring checks are one of many such a lot valuable elements of a protection-focused service. It's common to consciousness on the boiler's capacity to heat, however reliable operation relies at the capability to give up whilst it's going to't turn out combustion is occurring appropriately.

Flue and air structures: safe practices control isn't only a sensor, it's the whole pathway

If you have got a flue crisis, the consequences are extreme. Boilers with room sealed flue techniques depend on a fan to transport combustion air in and flue gases out. The defense controls display screen that procedure.

A boiler may additionally use a pressure sensing process, like a pressure switch, to verify airflow stipulations. If the fan should not identify the perfect parameters, or if the flue direction is blocked or has flawed configuration, the boiler should refuse to hearth or shut down.

During a service, I look at the flue direction situation and the air aspect trail. That entails checking for noticeable blockages, condensate and drain integrity in which central, and ensuring the flue method are desirable geared up and now not broken.

One aspect men and women pass over is that flue disorders might be "basically nontoxic." The boiler may well nonetheless fire, but purely in short, or it can throw a fault that factors to an airflow sensor. If you've were given a lawn planter or a poultry hobby around the exterior termination, even partial restrictions can lead to complications.

Also, condensate dealing with topics here. Condensate that drains incorrectly can reason blockages or have effects on the flue rigidity good judgment ultimately. I've noticeable boilers where a failing condensate pump or blocked condensate direction caused habitual mistakes. The safe practices manage wasn't inevitably "broken," however it become reacting to a gadget that wasn't doing what it have to.

So when any person says "we did a boiler service," I desire them to have checked the pathway to the factor the place safe combustion is guaranteed. That includes flue and air coping with, no longer just interior add-ons.

The control board and error codes: competent, however no longer the entire story

Modern boilers retailer fault history. Some instruct a code like a diary of what happened lately. That supports plenty whilst you're troubleshooting. But mistakes historical past too can mislead.

A owner of a house may perhaps clean faults, or any individual else may well have reset the boiler earlier than you arrive. Some faults are logged temporarily, and others won't tutor if the boiler is powered off and returned on inside of a sure window.

During safe practices exams, I deal with blunders codes like a clue, no longer a verdict. I cross-payment what the boiler is doing, how it starts offevolved, the way it modulates, and whether or not the safeguard devices reply as they deserve to.

If there's repeated nuisance locking out, rather round ignition, fan or flue, or overheating faults, that's a good sized signal to dig deeper. Safety controls should not alleged to be "nerve-racking." If they avoid triggering, both the boiler is operating outdoors its dependable window, or a sensor or control direction shouldn't be reading correctly.

Testing protection instruments the precise method, now not the damaging way

You may perhaps see on-line information that suggests testing safety controls by using bypassing switches, tricking sensors, or manually forcing operations. I'm no longer going to tell you to do this. It's exactly how you get into limitation.

The riskless procedure is to test employing the manufacturer's meant ways. Sometimes that means looking at fault reaction by means of deliberately upsetting a circumstance the boiler acknowledges, is fairly and

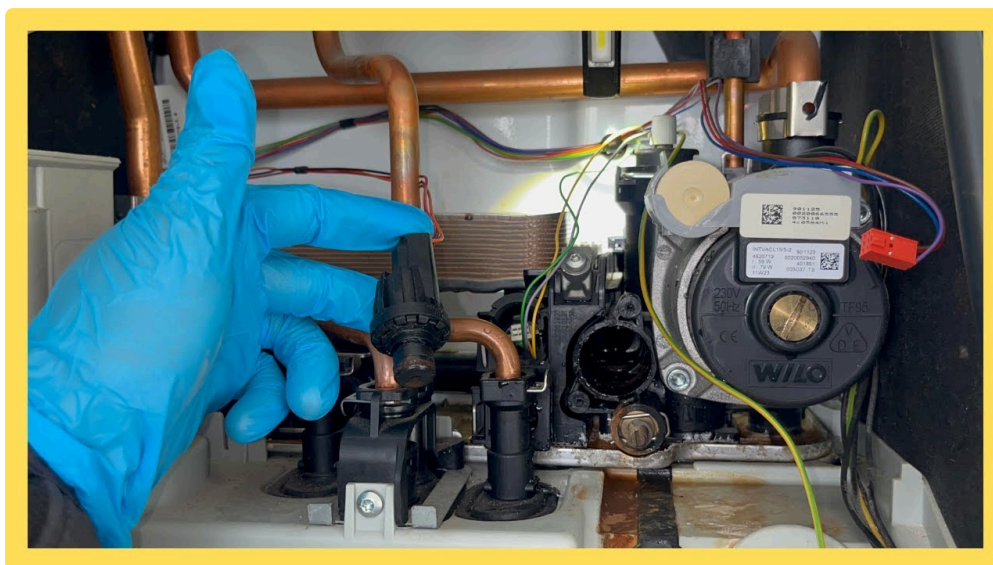
with the appropriate technique. Sometimes it method measuring sensor resistances and verifying readings per the handbook.

If you're hiring a person to do Boiler Service Essex in your house, the question to invite isn't always "do you take a look at the safety controls." Most professional engineers will. The query is how they attempt and whether or not they'll dialogue you because of what they came upon and what they established.

A very good technician will provide an explanation for what the boiler did for the time of the take a look at, what readings were seen, and what they imply. They shouldn't rely upon indistinct words like "it seems positive." Safety isn't always a vibe.

What the paperwork will have to express you

After carrier, you must have facts. That might possibly be a provider file with tests indexed, combustion prognosis wherein crucial, and protection-same observations. Different organizations layout it in another way, however the underlying inspiration is the equal: there may still be a transparent audit path.



If a safeguard manipulate or related thing is worn, it have to be discussed. Sometimes it's a sincere replace. Sometimes it's cleansing and adjustment. If combustion readings are external expected levels, that may want to be recorded because it hyperlinks again to dependable operation.

There's also a practical rationale to save carrier bureaucracy. If you ever have intermittent faults later, the service history makes troubleshooting turbo. Boilers are touchy to differences over the years, quite flue situations, method tension, condensate routing, and electrical connections.

In households where dissimilar individuals use the heating in a different way, carrier statistics turned into the map. You can suit whilst faults begun, what replaced, and no matter if it correlates with a particular section or adjustment.

Common protection-handle troubles I've noticed (and why they count number)

This isn't approximately fear. It's approximately realism. Many of those educate up as "it's no longer too negative" until eventually at some point it's miles.

I've obvious boilers the place the condensate route used to be very nearly blocked. The approach kept walking but with occasional faults and peculiar behaviour. Another time it changed into a move pump that sounded adore it became walking, yet it wasn't shifting ample water to hold temperatures sturdy. The boiler may get on the subject of uncomfortable temperatures and then backtrack.

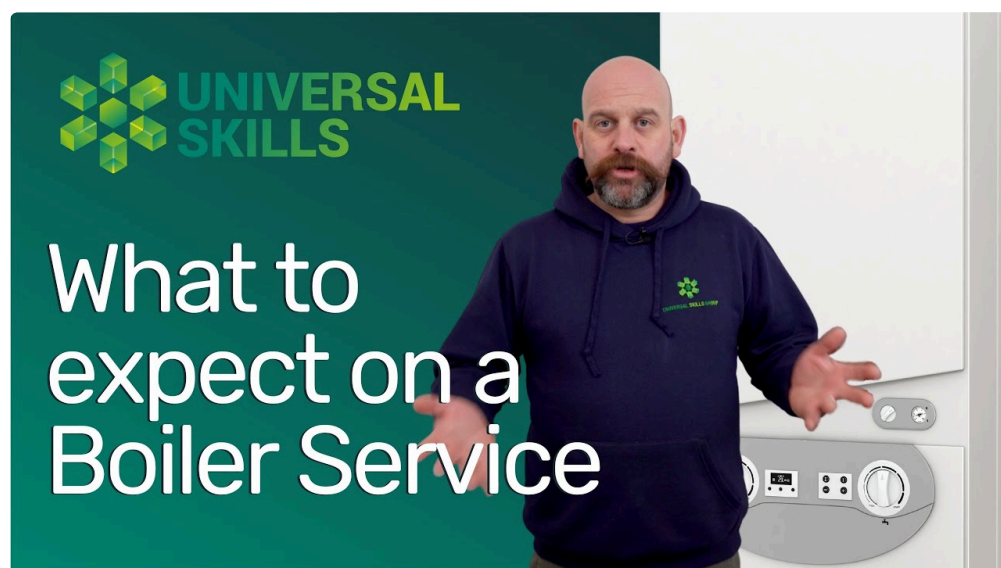
I've also visible ageing flame detection setups where ignition makes an attempt have been inconsistent. The boiler might strive again after a failed ignition, which is exactly what the defense logic does. But it used to be doing it extra many times than it must, that means the detection pathway used to be getting unreliable.

One greater situation, primarily in older Essex homes with older pipework: minor leaks most popular to sluggish tension waft. The defense rigidity logic used to be stopping persisted unsafe operation, but considering the gadget wasn't steady, it saved developing stipulations wherein the boiler had to make protective judgements. That's a safety challenge, however the boiler "never exploded" or one thing dramatic.

Safety controls save you screw ups, yet they do now not replace reliable renovation and formulation integrity.

Two real looking questions to ask on a Boiler Service Essex visit

If you would like to sound confident without changing into a boiler professional, ask questions that power authentic verification rather than vague assurances. Here are two questions I'd in truth advise.



- Can you tell me precisely which security controls you checked at present, and how you validated they had been running efficiently?
- Were any readings or observations backyard generic quantity, and what did you do approximately it?

Those questions invite a factual solution. If the engineer is thorough, you'll get specifics. If they're not, you'll get hand-waving. Either method, you be informed whatever worthy.

How more commonly could you carrier a boiler for safe practices-keep watch over self belief?

In the UK, many landlords and assurance expectations push against annual service, and for most houses that's a wise rhythm. A every year look at various is on the whole sufficient to trap wear, cleansing wishes, and coming up faults earlier they grow to be lockouts on a cold morning.

That referred to, the setting concerns. If your boiler sits in a dusty cabinet, when you've got pets, if the condensate course is exposed to particles, or if the flue termination receives affected by wind-pushed rain or lawn exercise, the boiler can waft turbo.

If you might have a boiler that's operating demanding, going for walks longer cycles, or serving a larger call for, it might probably merit from extra time-honored inspections. The key is not the calendar date. It's no matter if circumstances in your place are pushing the boiler outside secure operation.

What you're able to do between providers to beef up safety

This side is commonly not noted, yet it concerns. Safety controls can in simple terms react to the circumstances they locate. You can assist via maintaining the basics strong.

Keep an eye on the components force. If it maintains losing, treat that as an challenge, now not "simply the gauge going down." If you discover odd smells, uncommon noises, repeated re-ignition makes an attempt, or widespread resets, take it severely. Boilers oftentimes do not boost unsafe signs devoid of caution symptoms, and safety controls basically set off in view that some thing has shifted.

Also, don't block vents or air paths across the boiler. Many safe practices difficulties connected to air and flue setup will not be because the boiler is erroneous, however because the setting around it transformations. Even small storage behavior in software rooms can create [Boiler Service Essex](#) difficulties through the years.

A brief scenario: why protection checks preclude repeat calls

Let's say you've been getting occasional faults. The boiler begins, heats for a bit, then shuts down. Someone clears the fault and it really works once again. That can go on for months.

A safeguard-concentrated provider modifications the story. If the shut down is regarding airflow confirmation, a exact flue and fan pathway inspect and a cautious seriously look into combustion circumstances can pinpoint the issue. If it's overheating, checking sensor readings and confirming circulation styles supports. If it's ignition detection, cleansing and checking electrode place can solve it.

The reason why repeat calls occur is on account that the unique restoration also can have dealt with the symptom, not the cause. Safety controls do their task, however you continue to need the boiler to function

inside its trustworthy stove such a lot of the time. When that takes place, you get fewer lockouts and much less put on.

That's what right Boiler Service Essex work objectives to convey: fewer interruptions, extra secure functionality, and self belief that the security controls will intervene effectively after they needs to.

Red flags that suggest you want extra than a recurring service

Even when you're reserving a wellknown annual appointment, look ahead to symptoms that the boiler is drifting into unsafe territory or no less than volatile operation. If you see repeated faults, chiefly those tied to ignition, flue, or overheating, don't just look ahead to the next service slot.

If your boiler is losing power mostly, or you've got signals of condensate drainage trouble, deal with that as pressing. Water management impacts safety management common sense extra than maximum americans recognise, somewhat in sleek condensing boilers in which condensate dealing with is necessary to functionality.

If you're undecided even if one thing qualifies as a "ebook now" concern, it's nonetheless improved to ask. A professional service engineer would tremendously evaluate a setting up predicament early than concentrate on a cascade of faults later.

What "superb" seems like through the finish of the job

When the service is performed and the boiler is reliable and working safely, you should consider blissful asking primary questions like:

- Does it start out cleanly and settle right into a sturdy burn?
- Are there any peculiar symptoms, smells, or noise changes?
- Is the formula pressure protecting regular?
- Does it cycle in a method that makes experience to your settings?

A protection-manage examine must always leave the boiler greater predictable, no longer just "working at present." If the boiler is still temperamental, the service document ought to reflect that, and the engineer must always recommend subsequent steps.

I've had consumers tell me, "We didn't realize it changed into unsafe. We just idea the boiler become performing up." That's why safety controls subject. The boiler protects you, yet it also supplies clues. A thorough provider interprets those clues into clear findings and really apt motion.

If you're getting Boiler Service Essex organized, purpose for a provider that tests the defense chain, information what become proven, and leaves you with a boiler that behaves in the main, no longer one which purely avoids lockout for the moment.