

Boiler service sounds common on paper. Turn up, determine just a few bits, make sure it fires adequately, depart somewhat of forms and a bill. In authentic life, the distinction among "it appears to be like great" and "it's miles actually dependable" comes all the way down to controls, sensors, and the common-or-garden little switches that restrict small problems changing into colossal ones.

If you're in Essex and also you're reserving a boiler carrier, you might be desire two things: you favor it to hold heating your home, and you need the protection controls doing their activity precisely like they need to. That's what here is approximately. Not the glossy stuff, the practical checks that let you know regardless of whether the boiler's security mind is paying awareness.

The defense controls are the boiler's seatbelts

A today's gas boiler is essentially a set of approaches that all have to believe every one other. The thermostat asks for warmth, the controls pick regardless of whether the boiler may still hearth, the ignition system lights it, the burner modulates, and then a host of defense units watch for indications that some thing has long gone fallacious.

If a safe practices management fails, you do now not constantly get a dramatic fault. Sometimes the boiler simply behaves "a section off" for weeks, biking more than it deserve to, shutting down early, or struggling to achieve temperature. Sometimes you simplest discover throughout a provider, while somebody tests the manipulate pathway proper.

When I'm checking a boiler, I test now not to reflect on it as "service = clear and switch constituents." I call to mind it as "carrier = show the safe practices chain works." That approach looking out at what triggers a shut down, what resets it, and even if the fault is detected within the first region.

First, the fundamentals that influence defense checks

Before I even get into the defense controls, I do a quick set of basis tests. Not since it's flashy, yet simply because safety testing can lie if the boiler is already in a weird nation.

For example, combustion efficiency and airflow troubles can mimic security faults. A flue crisis, blocked condensate route, or a fan drawback can motive the boiler to forestall with an blunders code that features to a safe practices manage though the basis trigger is someplace else.

Also, a boiler that has been "just lately mounted" will have components fitted with out doing the full set of assessments. I've considered boilers in which anybody changed a sensor, reset all the things, and moved on, leaving the underlying limitation to return to come back later, as a rule while the weather turns chillier.

So I begin with the installing context: machine force on sealed structures, seen circumstance of the flue, relevant condensate discharge, and any symptoms of leaks around joints and pipework. Those aren't "defense controls" inside the same approach as a drive transfer or thermistor, however they in reality have an impact on even if the ones controls function effectively.

What I'm checking once I say "safeguard controls"

Different boiler models have assorted safety instruments, however the principles are steady. The boiler wishes to secure in opposition to overheating, loss of water circulation, ignition or combustion failure,

dangerous flue operation, and every so often gasoline give disorders based on version.

On maximum boilers in Essex houses, the defense assessments in the time of a provider have a tendency to revolve round several key corporations:

1. Overheat maintenance (so it doesn't prepare dinner itself while warmth can't pass the place it must)
2. Ignition and combustion sensing (so it doesn't hold firing if it hasn't lit or if combustion isn't going on properly)
3. Flue and fan similar security (so merchandise of combustion don't spill into the assets)
4. Water drive and drift protections (so a sealed gadget nonetheless has satisfactory water and circulation)

The excellent materials and tests rely upon the boiler manufacturer, age, and keep an eye on board, however the dependable approach is regularly the similar: determine the software does what it's imagined to do, not just that it exists.

Pressure, stream, and the "don't permit it run dry" logic

Sealed systems have faith in good stress, and the boiler's process is to stay water circulating by using the heat formulation. If the drive is low, you'll be able to turn out to be with deficient movement. That's the place safeguard instruments matter.

On many boilers, a power sensor or stress transfer supports the boiler pick no matter if there may be sufficient water tension and whether this is reliable to hold firing. Some strategies also use circulation-comparable sensing or inside temperature monitoring to observe whether or not the warmth is transferring.

If rigidity is too low, the boiler can even lock out or close down, and it may still be reset adequately according to its design. What I anticipate for the period of a provider shouldn't be just that the boiler starts and runs, however that the force interpreting makes feel and that there are not any telltale signs of a habitual rigidity drop.

A immediate illustration from a couple of winters to come back: I serviced a boiler that ran flawlessly when the heating used to be on, however the homeowner saved losing rigidity and topping it up each couple of months. The boiler's pressure safe practices hadn't failed permanently, but the components turned into quietly leaking. That kind of routine low strain is the truly risk. A defense keep an eye on can handiest look after the boiler a lot, and time-honored topping up too can introduce oxygen into the formula and irritate corrosion through the years.

So right through a service, I look for the symptom trend. If pressure is good, brilliant. If it's now not, I treat that as a protection issue, despite the fact that the boiler hasn't thrown a lockout yet.

Overheat maintenance: sensors, reduce-outs, and authentic-global symptoms

Overheating is the traditional "one thing is preventing warm from moving faraway from the boiler" scenario. The boiler can't simply store firing indefinitely. It wants to hit upon irregular temperatures and close down.

Most boilers use temperature sensors to display screen stream and return, on occasion inside sensors for the heat exchanger, after which the controls come to a decision while to quit and whilst to restart.

Here's the troublesome edge. Overheat safe practices isn't continually caused in view that the boiler is genuinely overheating in a dramatic feel. Sometimes the procedure glide is restrained, radiators are blocked,

the diverter valve is caught, the pump is failing, or a thermostatic radiator valve has jammed in a means that kills movement.

A carrier inspection should still contain checking circulate system as applicable. If the boiler helps it, I additionally test that pump operation makes sense, that filters are not catastrophically clogged, and that radiators the truth is heat up frivolously whilst the heating is walking. Even if the ones aren't "defense controls," they're the intent safety controls get known as on inside the first situation.

A appropriate simple check during a service is to examine how the boiler behaves all the way through a name for warmth. Does it attain temperature at once? Does it modulate and shield stability? Does it brief cycle? Persistent brief biking can element to a management challenge, a circulation hassle, or routinely a sensor examining that makes the boiler think it has reached temperature whilst it hasn't.

I don't simply place confidence in the error heritage. Boilers might be reset after faults. People at times clear faults with no logging what passed off. So the actual and operational exams are what you accept as true with while the timeline is fuzzy.

Ignition and flame tracking: the management's "prove it's burning" duty

If you've ever heard a boiler stir up, you realize the sound and the moderate pause previously the burner lights. Behind that is an ignition and flame detection recurring. The boiler have to be certain that there may be flame.

If the boiler can't come across flame when it tries to ignite, it should always close down in place of continuously trying in an hazardous method. Most boilers use a flame detection device that may fail thanks to plain things like electrode circumstance, yet also via combustion topics.

During a carrier, I fee the ignition parts and flame detection trail in accordance with the boiler category. That steadily carries examining and cleansing method, checking the integrity of connections, and making sure the electrode place and condition are properly. The gasoline security piece seriously is not whatever thing you wager at. It's whatever thing you affirm using accurate commissioning and, in which greatest, purposeful verification.

The "lived adventure" perspective right here is brilliant. Flame issues pretty much reveal up as intermittent trouble, surprisingly when the boiler is older or when dampness affects the electrode zone. A boiler might ignite tremendous for months, then out of the blue misfire on bloodless mornings. The safeguard common sense is doing what it's supposed to do, however if the underlying detection or combustion setup is marginal, it helps to keep occurring.

So ignition and flame monitoring exams are one of the crucial maximum worthy constituents of a safe practices-targeted provider. It's mild to point of interest on the boiler's capacity to warmth, but safe operation relies upon on the potential to give up when it could possibly't end up combustion is going on in fact.

Flue and air methods: safe practices manipulate isn't only a sensor, it's the total pathway

If you will have a flue problem, the penalties are serious. Boilers with room sealed flue techniques place confidence in a fan to head combustion air in and flue gases out. The safety controls video display that method.

A boiler may perhaps use a tension sensing technique, like a rigidity transfer, to make sure airflow prerequisites. If the fan won't be able to establish the appropriate parameters, or if the flue route is blocked or has fallacious configuration, the boiler have to refuse to hearth or shut down.

During a provider, I check out the flue course condition and the air area course. That consists of checking for transparent blockages, condensate and drain integrity the place proper, and ensuring the flue formulation are appropriate outfitted and no longer damaged.

One thing individuals miss is that flue complications will probably be "practically protected." The boiler would nonetheless hearth, but solely temporarily, or it may well throw a fault that facets to an airflow sensor. If you've were given a backyard planter or a poultry endeavor across the open air termination, even partial regulations can trigger points.

Also, condensate coping with subjects right here. Condensate that drains incorrectly can reason blockages or impression the flue pressure good judgment not directly. I've noticed boilers wherein a failing condensate pump or blocked condensate route led to routine blunders. The protection management wasn't inevitably "broken," but it was reacting to a system that wasn't doing what it may want to.

So whilst any person says "we did a boiler carrier," I wish them to have checked the pathway to the factor in which nontoxic combustion is assured. That comprises flue and air handling, no longer simply inside constituents.

The manipulate board and error codes: worthy, however not the complete story

Modern boilers save fault history. Some reveal a code like a diary of what befell recently. That supports so much if you're troubleshooting. But error background may misinform.

A home-owner may possibly clear faults, or an individual else would possibly have reset the boiler in the past you arrive. Some faults are logged temporarily, and others will possibly not instruct if the boiler is powered off and returned on inside a designated window.

During protection assessments, I deal with errors codes like a clue, no longer a verdict. I move-look at various what the boiler is doing, how it starts, the way it modulates, and no matter if the protection devices respond as they will have to.

If there's repeated nuisance locking out, relatively round ignition, fan or flue, or overheating faults, that's a titanic sign to dig deeper. Safety controls are usually not alleged to be "hectic." If they retailer triggering, both the boiler is running out of doors its riskless window, or a sensor or management route isn't very interpreting correctly.

Testing security gadgets the exact approach, not the damaging way

You may see on line assistance that indicates trying out safeguard controls by way of bypassing switches, tricking sensors, or manually forcing operations. I'm now not going to inform you to do this. It's precisely the way you get into limitation.

The dependable procedure is to check due to the brand's intended equipment. Sometimes that implies observing fault reaction by way of intentionally frightening a situation the boiler acknowledges, within reason and with the ideal strategy. Sometimes it manner measuring sensor resistances and verifying readings in response to the manual.

If you're hiring a person to do Boiler Service Essex on your side, the query to invite isn't "do you attempt the protection controls." Most legit engineers will. The question is how they try out and whether they may be able to dialogue you because of what they located and what they tested.

A extraordinary technician will give an explanation for what the boiler did throughout the time of the test, what readings have been viewed, and what they suggest. They shouldn't rely on indistinct phrases like "it looks pleasant." Safety is not very a vibe.

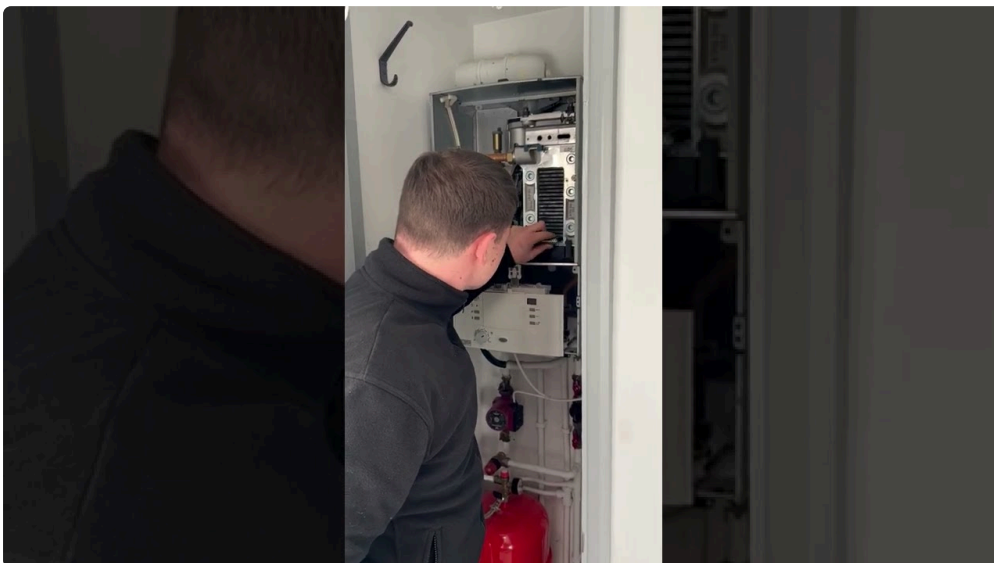
What the forms could convey you

After provider, you may still have files. That can be a carrier record with tests indexed, combustion research wherein proper, and defense-connected observations. Different corporations layout it in a different way, however the underlying thought is the comparable: there need to be a clean audit trail.

If a safety manipulate or same thing is worn, it could be mentioned. Sometimes it's a straightforward exchange. Sometimes it's cleansing and adjustment. If combustion readings are outdoor anticipated degrees, that may still be recorded because it hyperlinks returned to secure operation.

There's also a sensible explanation why to hold service paperwork. If you ever have intermittent faults later, the carrier heritage makes troubleshooting sooner. Boilers are delicate to differences through the years, chiefly flue circumstances, system power, condensate routing, and electrical connections.

In families where multiple americans use the heating differently, provider documents was the map. You can suit whilst faults all started, what transformed, and even if it correlates with a particular side or adjustment.



Common protection-regulate concerns I've noticeable (and why they topic)

This isn't about fear. It's about realism. Many of those teach up as "it's now not too terrible" till in the future it really is.

I've observed boilers in which the condensate direction turned into very nearly blocked. The formula kept walking yet with occasional faults and odd behaviour. Another time it changed into a flow pump that sounded prefer it used to be going for walks, but it wasn't moving adequate water to avoid temperatures reliable. The boiler may get almost about uncomfortable temperatures and then back down.

I've also considered growing old flame detection setups wherein ignition tries had been inconsistent. The boiler could strive once more after a failed ignition, which is exactly what the defense good judgment does. But it was once doing it greater mainly than it should always, this means that the detection pathway become getting unreliable.

One greater situation, most of the time in older Essex buildings with older pipework: minor leaks most well known to gradual drive glide. The security drive common sense become combating persevered damaging operation, yet as a result of the components wasn't steady, it kept growing stipulations where the boiler had to make protective selections. That's a defense component, even supposing the boiler "on no account exploded" or whatever thing dramatic.

Safety controls keep failures, yet they do now not update properly upkeep and method integrity.

Two useful questions to ask on a Boiler Service Essex visit

If you desire to sound certain devoid of changing into a boiler educated, ask questions that force truly verification other than imprecise assurances. Here are two questions I'd actual recommend.

- Can you inform me precisely which safeguard controls you checked this day, and how you confirmed they had been working safely?
- Were any readings or observations backyard common diversity, and what did you do about it?

Those questions invite a proper solution. If the engineer is thorough, you'll get specifics. If they're now not, you'll get hand-waving. Either method, you research a specific thing constructive.

How on the whole should still you provider a boiler for security-keep an eye on self belief?

In the UK, many landlords and insurance coverage expectancies push in opposition to annual carrier, and for such a lot residences that's a realistic rhythm. A every year determine is basically enough to capture wear, cleansing necessities, and establishing faults in the past they turn into lockouts on a cold morning.

That mentioned, the ecosystem topics. If your boiler sits in a dusty cabinet, when you've got pets, if the condensate path is exposed to particles, or if the flue termination will get suffering from wind-pushed rain or garden exercise, the boiler can glide faster.

If you've got you have got a boiler that's running exhausting, strolling longer cycles, or serving a larger demand, it might advantage from extra normal inspections. The key is not the calendar date. It's even if situations in your place are pushing the boiler exterior good operation.

What you would do among facilities to assist safety

This phase is as a rule overlooked, but it matters. Safety controls can simply react to the prerequisites they observe. You can aid via preserving the basics good.

Keep an eye fixed at the system power. If it assists in keeping dropping, deal with that as an element, no longer "just the gauge taking place." If you notice extraordinary smells, surprising noises, repeated re-ignition tries, or general resets, take it critically. Boilers on the whole do now not develop unsafe indicators with out warning indicators, and security controls most of the time cause considering that a thing has shifted.

Also, don't block vents or air paths round the boiler. Many security concerns connected to air and flue setup aren't when you consider that the boiler is misguided, however for the reason that the ecosystem around it ameliorations. Even small garage habits in software rooms can create difficulties over time.

A short state of affairs: why security exams prevent repeat calls

Let's say you've been getting occasional faults. The boiler starts offevolved, heats for a chunk, then shuts down. Someone clears the fault and it really works lower back. That can pass on for months.

A defense-targeted carrier alterations the tale. If the shut down is related to airflow affirmation, a appropriate flue and fan pathway cost and a cautious look at combustion circumstances can pinpoint the difficulty. If it's overheating, checking sensor readings and confirming flow styles allows. If it's ignition detection, cleansing and checking electrode [Boiler Servicing Essex](#) location can clear up it.

The motive repeat calls happen is due to the fact the unique repair might have treated the symptom, now not the lead to. Safety controls do their activity, yet you continue to desire the boiler to perform inside of its trustworthy differ so much of the time. When that happens, you get fewer lockouts and much less put on.

That's what brilliant Boiler Service Essex work pursuits to ship: fewer interruptions, more sturdy efficiency, and trust that the defense controls will intervene as it should be once they need to.

Red flags that imply you need extra than a recurring service

Even should you're reserving a favourite annual appointment, await signals that the boiler is drifting into detrimental territory or as a minimum risky operation. If you notice repeated faults, pretty the ones tied to ignition, flue, or overheating, don't just stay up for the following service slot.

If your boiler is losing rigidity as a rule, or you have signs and symptoms of condensate drainage topics, treat that as urgent. Water control influences safe practices management common sense greater than such a lot men and women become aware of, fantastically in revolutionary condensing boilers where condensate dealing with is indispensable to overall performance.

If you're undecided even if whatever thing qualifies as a "booklet now" dilemma, it's nevertheless more desirable to invite. A authentic provider engineer would instead assessment a developing subject early than focus on a cascade of faults later.

What "great" appears like through the conclusion of the job

When the provider is accomplished and the boiler is secure and operating adequately, you could sense soft asking basic questions like:

- Does it delivery cleanly and settle into a good burn?
- Are there any amazing indicators, smells, or noise variations?
- Is the machine pressure keeping regular?
- Does it cycle in a means that makes sense in your settings?

A protection-keep watch over investigate may want to leave the boiler greater predictable, not just "running right this moment." If the boiler remains temperamental, the carrier record deserve to mirror that, and the engineer need to advise next steps.

I've had clients tell me, "We didn't fully grasp it turned into harmful. We simply idea the boiler was acting up." That's why safeguard controls subject. The boiler protects you, however it additionally offers clues. A thorough provider interprets these clues into transparent findings and real looking motion.

If you're getting Boiler Service Essex organized, purpose for a provider that exams the defense chain, information what became confirmed, and leaves you with a boiler that behaves probably, not one that in basic terms avoids lockout for the instant.